



# Journal of Nutrition and Food Security

Shahid Sadoughi University of Medical Sciences  
School of Public Health  
Department of Nutrition  
Nutrition & Food Security Research Center



eISSN: 2476-7425

pISSN: 2476-7417

JNFS 2020; 5(3): 274-281

Website: jnfs.ssu.ac.ir

## *Effective Factors on Acute Malnutrition in Children Aged 6 to 59 Months in the Centre-West Region of Burkina Faso*

Jeanne d'Arc Kabre; MSc<sup>1</sup>, Sibiri Bougma; MSc<sup>1</sup>, Bassibila Zoungrana; MSc<sup>1</sup>,  
Yves Traoré; PhD<sup>1</sup> & Aly Savadogo; PhD\*<sup>1</sup>

<sup>1</sup> Laboratory of Applied Biochemistry and Immunology (LaBIA), University Joseph KI-ZERBO, 03 BP 7021 Ouagadougou 03, Burkina Faso.

### ARTICLE INFO

#### ORIGINAL ARTICLE

#### Article history:

Received: 24 Feb 2020

Revised: 21 Jun 2020

Accepted: 10 Jun 2020

#### \*Corresponding author:

alysavadogo@gmail.com

Laboratory of Applied Biochemistry and Immunology (LaBIA), University Joseph KI-ZERBO, 03 BP 7021 Ouagadougou 03, Burkina Faso.

Postal code: 03 BP 7021

Ouagadougou 03

Tel: +226-70 35 62 27

### ABSTRACT

**Background:** In Burkina Faso, malnutrition is a public health problem. Despite the significant drop in the prevalence of malnutrition since 2009 according to the Directorate of Nutrition, malnutrition is still a major concern with regard to its consequences. The objective of this study was to determine the factors associated with acute malnutrition in children aged 6 to 59 months in the Sabou Health District, Burkina Faso. **Methods:** This was a descriptive, cross-sectional study conducted among 343 children aged 6 to 59 months in Sabou Health District, Burkina Faso from August 1<sup>st</sup> to 30<sup>th</sup>, 2016. Factors associated with acute malnutrition were dietary factors, family factors, environmental factors, and infectious factors determined using SPSS version 21.0 software. The difference was statistically significant for *P*-value of less than 0.05. **Results:** The prevalence of global acute malnutrition in the district was 9.0%, of which 2.6% was severe according to the Brachial Perimeter. Several factors were associated with acute malnutrition in children under 5 years of age in the Sabou health district. Indeed, morbidity was a factor associated with acute malnutrition in children with a *P*-value of 0.007. The low dietary diversity experienced by food-insecure households was also associated with acute malnutrition in children. Infant and young child feeding practices, i.e., inadequate introduction of complementary foods and low dietary diversity to children were among the factors associated with nutritional status (*P* = 0.007). Among mothers, 87.5% had heard of malnutrition, 66.5% did not recognize the signs of malnourished in their children, and 92.4% were unaware of the consequences of malnutrition. **Conclusion:** Based on the results, initiatives and programmes should be established for women, the bearers of life, to enhance their empowerment and educate them with regard to the integral growth of children, the builders of tomorrow.

**Keywords:** Causes; Acute malnutrition; Household; Child; Burkina Faso

### Introduction

Malnutrition is a major public health problem worldwide; it is serious enough to call into

question the sustainable development goals (Resnick et al. 2015), particularly in the

This paper should be cited as: d'Arc Kabre J, Bougma F, Zoungrana B, Traoré Y, Savadogo A. *Effective Factors on Acute Malnutrition in Children Aged 6 to 59 Months in the Centre-West Region of Burkina Faso. Journal of Nutrition and Food Security (JNFS)*, 2020; 5 (3): 274-281.

developing countries. For millions of survivors, malnutrition causes after-effects in the form of infirmity, chronic vulnerability to disease, and intellectual disability that can affect the human life cycle (UNICEF, 2000).

At the global level, an estimated study conducted by UNICEF/WHO/WB showed that 161 million children under 5 years of age were stunted, 51 million were underweight for height, and 42 million were overweight; none of these children were growing up healthy (Smith and Haddad, 2014). Despite overall reduction in the number of undernourished people during 1992-2013, sub-Saharan Africa has remained the region with the highest prevalence of undernourishment (24.8%) with more than 223 million undernourished people (Carletto *et al.*, 2013).

Each year, 20 million infants are born with low birth weight (15.5% of all births), 13 million of them had intrauterine growth retardation (Blanc and Wardlaw, 2005).

In Burkina Faso, the maternal and child health situation is worrying (Ministry of Health, 2014). More than one child out of six dies before the age of five, which is equal to 125,000 deaths each year (UNICEF Staff, 2011).

Malnutrition affects children in rural areas (37%) than urban areas (21%) (National Institute of Statistics and Demography (INSD), 2010). According to the National Nutrition Survey (Ministry of Health, 2016), the global acute malnutrition in Burkina Faso has a prevalence of 7.6%, of which 1.4% of the cases are severe. At the regional level, disparities in prevalence exist from one region to another.

The survey shows that approximately one third of children under the age of five (27.3%) suffer from stunting, 7.4% of whom are severely stunted.

A national prevalence of underweight of 19.2% was estimated in 2016, of which 3.7% is severe (Ministry of Health, 2016). The prevalence of underweight ranges from 14.1% in the Central region to 25.7% in the Eastern region.

Despite the efforts made by the government, a need for further research exists on the factors associated with acute malnutrition, especially in

rural areas, where the highest rates are recorded. So, this study was conducted to investigate the factors associated with acute malnutrition in children aged 6 to 59 months in the Sabou health district. More specifically, we intended to estimate the prevalence of acute malnutrition and identify the factors associated with acute malnutrition such as dietary factors, family factors, environmental factors and infectious factors.

### Materials and Methods

The study tried to investigate effective factors on the acute malnutrition in children aged 6-59 months. This research was carried out in the Sabou health district in Burkina Faso from August 1<sup>st</sup> to 30<sup>th</sup>, 2016. After enumeration of the households, a random draw was made by ENA software to select 385 households out of a total of 21,158 to conduct the study. In these households, the mothers of 343 children aged 6 to 59 months were interviewed. The data were collected on a survey form designed for the study. The brachial perimeter was the anthropometric measure used to classify the nutritional status of children. On the survey form adopted for the study, we collected data on socio-demographic variables such as: age, morbidity, household environment, parents' marital status, as well as parents' economic and educational level.

The household food diversity score was calculated by counting the number of food groups consumed in the household over a 24-hour period. This dietary diversity score was constructed on the basis of a list of 16 food groups classified into 12 groups (Yousaf *et al.*, 2018).

The food insecurity score was calculated from the responses to 9 questions in a standardized questionnaire on household experiences, following the method recommended by FANTA 4 (Food And Nutrition Technical Assistance) (Carletto *et al.*, 2013). For each response, a score was assigned according to the frequency of the corresponding event experienced by the household in the previous month: 0 (never), 1 (rarely), 2 (sometimes), or 3 (often).

The infant and young child feeding (IYF) indicators were also calculated according to the international recommendations. The indicators included early initiation of breastfeeding, continued breastfeeding at one year of age, introduction of complementary foods, minimum dietary diversity, minimum frequency of meals, and minimum acceptable feeding.

## Results

Our study involved 343 children aged 6 to 59 months including 47.5% boys and 52.5% girls. In Sabou Health District, 72.9% of the households did not have a latrine, 63.8% did not have a garbage bin (**Table 1**), 21.8% did not have potable water for consumption (**Table 1**), and more than half of the households (68.8%) were highly food insecure; 28.8% and only 2.3% were at moderate and low levels of food insecurity, respectively (**Table 1**).

Mostly family polygamous (65.3%), households in Sabou Health District lived mainly from agriculture (89%), commerce (6%), and cattle breeding (4%). About 70.3% of the mothers had no income-generating activity and the level of education was low overall. In fact, 71.9% of the household heads and 77.6% of mothers had no education. The average household size was 15 persons and the average number of children per mother was 6. Many mothers were still unaware of the effects of malnutrition. Although 87.5% of the mothers had heard of malnutrition, 66.5% had no evidence to recognize a malnourished child and about 92.4% of the mothers were unaware of the consequences of malnutrition on their children. In our study, the prevalence of global acute malnutrition was 9.0%, of which 2.6% was severe (**Figure 1**).

In Sabou Health District 54.8% of the households had low dietary diversity (score < 4), 36.4% had medium diversity, and only 8.7% had

high dietary diversity (**Figure 2**).

Of 31 cases of malnourishment, 61.3% were boys and 38.7% were girls, although the sample included 47.5% boys and 52.5% girls. The majority of malnourished children (77.4%) were between 6 and 23 months of age (**Table 2**).

Almost all mother of malnourished children was interviewed and the findings showed that 96.8% had suffered from some kind of illness two weeks preceding the survey. In this regard, 16.1% of the malnourished children had developed malaria, 29% had suffered from diarrhoea, and 54.9% experienced a respiratory infection (**Table 3**).

The prevalence of malnourished children living in households with severe and low food insecurity were 80.6% and 61.3%, respectively (**Table 4**).

The IYF practices among the malnourished children remained very unsatisfactory and could explain their nutritional status. According to the findings, 99.7% of these children benefited from breast milk, only 22.6% were exclusively breastfed until 6 months and 54.8% of these malnourished children benefited from colostrum. In addition, none of the malnourished children had consumed vitamin A-rich fruits and vegetables the day before the survey. For complementary feeding, no malnourished children aged 6-8 months received solid, semi-solid, or soft food the day before the survey. Only one malnourished child (3.2%) aged 6-23 months consumed at least 4 food groups.

The findings showed that five factors were associated with acute malnutrition in children under five years of age: age morbidity, low dietary diversity of households, accompanied by high food insecurity, and poor IYF practices, namely inadequacy of complementary foods and low dietary diversity among children.

**Table 1.** Levels of household food safety and security

Variables	N	%
Latrines		
Yes	105	27.1
No	280	72.9
Refuse receptacle		
Yes	139	36.2
No	246	63.8
Drinking water source		
Yes	301	78.2
No	84	21.8
Level of household food security		
Low	265	68.8
Medium	111	28.8
High	9	2.4

**Table 2.** Relationship of acute malnutrition with age and gender

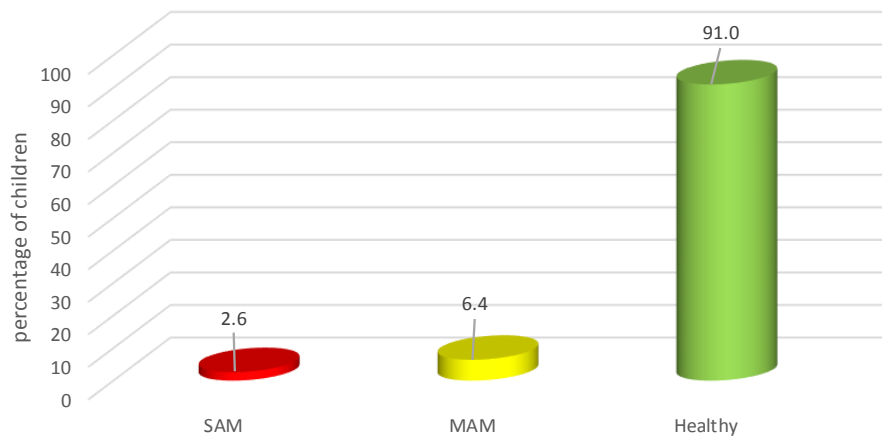
Variables	Number of malnourished children	Percentage	P-value
Gender			
Male	19	61.3	0.075
Female	12	38.7	
Age (month)			
6 - 23	24	77.4	0.014
24 - 59	7	22.6	

**Table 3.** Relationship between acute malnutrition and morbidity

Variables	Number of malnourished children	Percentage	P-value
Malaria	5	16.1	0.007
Diarrhoea	9	29.0	
Respiratory infection	17	54.9	

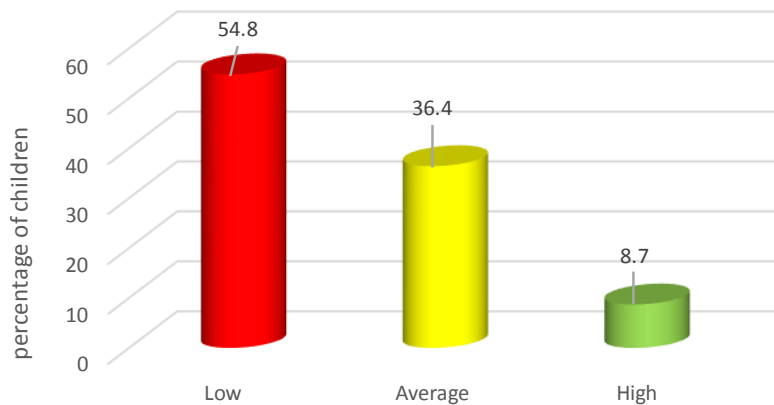
**Table 4.** Dietary factors associated with acute malnutrition

Variables	Number of malnourished children	Percentage	P-value
Dietary diversity			
Low	19	61.3	0.002
Average	12	38.7	
High	0	0.0	
Food insecurity			
Severe	25	80.6	0.006
Average	6	19.4	
Low	0	0	



**Figure 1.** Nutritional status of children

Children suffering from severe acute malnutrition (SAM) are represented by red. Those suffering from moderate acute malnutrition (MAM) are represented by yellow and the most numerous healthy children are represented by green.



**Figure 2.** Distribution of households according to dietary diversity

The different households interviewed were distributed according to their dietary diversity. Thus, the maximum number of households (red) has a low dietary diversity and only less than 10% (green) has a high dietary diversity.

### Discussion

The nutritional status of children under five years of age is often associated with certain infectious factors, family factors, and inappropriate IYF practices.

In the Sabou health district, 72.9% of the households did not have a latrine (they used nature as their main toilet) and 63.8% did not have a rubbish bin. The National Survey on Food Insecurity and Malnutrition organized by the Ministry of Agriculture found that 80% of the households in the centre west did not have latrines (Olney *et al.*, 2015). This considerable lack of

latrines, coupled with inadequate waste management is believed to pollute surface waters, leading to the persistence of water-borne diseases. Access to safe drinking water is considered as one of the essential components of household nutrition in rural areas. If this access is not guaranteed, it results in individuals' exposure to many diseases, especially for young children.

In the Sabou health district, 21.8% of the households do not have access to drinking water for consumption, which results in consequences, especially among children under five years of age. A joint study carried out by 2iE/UNICEF in

suburb areas of the central plateau showed that 95% of the water consumed at homes was no longer drinkable because it was contaminated during the transport and storage chain (Bonkougou, 2015). Poor water quality and inadequate hygiene practices are sources of diarrhoeal diseases and parasitic infections. Similarly, open defecation and littering on the streets have a negative impact on the health of communities, especially children.

Common illnesses encountered in children were malaria, diarrhoea, and respiratory infections with respective prevalence of 40.8%, 46.6%, and 57.8% in the district, respectively. This high prevalence of morbidity is due to the high level of insalubrity in households caused by lack of latrines and garbage bins. This finding can also be explained by use of well water as a source of drinking water by households. The SMART survey of the Directorate of nutrition reported that the prevalence of diarrhoea and fever were 16.6% and 33.7% in the central-western region, respectively (Ministry of Health, 2016).

More than half of the households (68.8%) were highly food insecure, 28.8% were moderately food insecure, and only 2.3% were low food insecure. Our results are similar to those found by the ministry of agriculture, which found that 64.4% of the households in the central-west were highly food insecure (Olney *et al.*, 2015).

Today, the ideal of food security for all people at all times is far from being achieved in most households in Burkina Faso, where more than 20% of the population is undernourished (National Institute of Statistics and Demography (INSD), 2010). This situation has been even worsened in recent years as the food and nutrition situation is threatened by the scarcity and poor distribution of rainfall.

The results showed a very low level of dietary diversity in most households at the district level. In the Sabou health district, 54.8% of the households had low dietary diversity (score < 4), 36.4% had medium diversity, and only 8.7% had high dietary diversity. The staple foods for all households in rural areas are generally self-

produced cereals and leafy vegetables.

Several factors are associated with acute malnutrition in children. Initially, the majority of malnourished children (77.4%) were within the age range of 6-23 months, who showed high prevalence of acute malnutrition. So, this age group was considered as the preferred age for the onset of malnutrition (Victora *et al.*, 2010, World Health Organization, 2005). Several factors can lead to the prevalence of malnutrition during 6 to 23 months of age including use of complementary foods since breast milk is no longer sufficient to cover the infant's needs. Malnutrition was associated to inadequate supplementary feeding in terms of quantity and quality.

In most children, illnesses associated with acute malnutrition include diarrhoea, malaria, and respiratory infections. These diseases are, directly or indirectly, the leading causes of death among young children in the developing countries (Organization, 2003). Almost all malnourished children, 96.8% had suffered from some kind of illness two weeks preceding the survey. Based on the results, 16.1% of the malnourished children had developed malaria, 29% suffered from diarrhoea, and 54.9% experienced a respiratory infection. These results are similar to those reported by other (Ouedraogo, 2013). He mentioned that the diseases associated with malnutrition were mainly diarrhoea (44%) and respiratory infections (56%). Zoungrana *et al.* reported that 18.4% of the malaria cases had acute malnutrition (Zoungrana *et al.*, 2019), which confirms that morbidity caused by diarrhoea, malaria, and respiratory infections is a factor associated with acute malnutrition in children.

Household food insecurity and low dietary diversity were among other factors associated with malnutrition in children under five years of age. The prevalence of malnourish among children living in households with severe food insecurity and low dietary diversity were 80.6% and 61.3%, respectively. This low dietary diversity accompanied by severe household food insecurity is found to be a factor associated with

child malnutrition. The scarcity of food in households could be justified by the period of our survey, which was conducted from August 1 to August 30, when the various foodstuffs in the fields, on which the households directly depend, were not yet mature.

The IYF practices were very unsatisfactory among the malnourished children. Complementary feeding and diversification, i.e., consumption of at least 4 food groups in 24 hours, was also a factor associated with the nutritional status of children aged from 6 to 23 months. Considering the complementary feeding, no malnourished children received solid, semi-solid, or soft food the day before the survey. Only one malnourished child (3.2%) consumed at least 4 food groups. The late onset of complementary feeding in these children can explain their nutritional status. Considering the high nutritional requirements of children within the age range of 6 to 23 months for rapid growth, appropriate complementary feeding would provide the key nutrients for good growth. Late food supplementation and early ab lactation are thought to cause malnutrition.

### Conclusion

Several factors are associated with acute malnutrition in children under five years of age in Burkina Faso. These factors included the age range of 6 to 23 months, morbidity, low dietary diversity accompanied by food insecurity, and some IYF practices, namely the inadequate introduction of complementary foods, and persistent low dietary diversity in children.

Preventive health and nutrition interventions have demonstrated that good IYF practices had a significant impact. Therefore, it is necessary to strengthen good IYF practices and to establish initiatives and programmes in favour of women to empower and educate them with regard to the integral growth of children.

### Conflicts of Interest

The authors state no conflict of interest.

### Authors' contributions

Savadogo A was involved in designing and supervising the study. Kabre J was involved in

designing the study, collecting and analysing the data, as well as writing the manuscript. Bougma S and Zoungrana B participated in analysing the data and writing the manuscript. Traore Y supervised the study. All authors declare that they critically reviewed the manuscript and approved the final version submitted for publication.

### Acknowledgements

The authors would like to thank the staff of the Sabou Health District and the CREN Maximilien COLBE for their multifaceted support during data collection.

### References

- Blanc AK & Wardlaw T** 2005. Monitoring low birth weight: an evaluation of international estimates and an updated estimation procedure. *Bulletin of the World Health Organization*. **83**: 178-185.
- Bonkougou S** 2015. Drinking water quality and related health risks in the South-West region: the case of the commune of Dano. International Institute for Water and Environment: Burkina Faso.
- Carletto C, Zezza A & Banerjee R** 2013. Towards better measurement of household food security: Harmonizing indicators and the role of household surveys. *Global Food Security*. **2 (1)**: 30-40.
- Ministry of Health** 2014. National Protocol for the Integrated Management of Acute Malnutrition (PCIMA) in Burkina Faso.
- Ministry of Health** 2016. National Nutrition Survey. (ed. F. Report): Burkina Faso.
- National Institute of Statistics and Demography (INSD)** 2010. Demographic and Health and Multiple Indicator Cluster Surveys (EDSBF-MICS IV). Preliminary report. Burkina Faso.
- Olney DK, Pedehombga A, Ruel MT & Dillon A** 2015. A 2-year integrated agriculture and nutrition and health behavior change communication program targeted to women in Burkina Faso reduces anemia, wasting, and

diarrhea in children 3–12.9 months of age at baseline: a cluster-randomized controlled trial. *Journal of Nutrition*. **145 (6)**: 1317-1324.

**Organization WH** 2003. Global strategy for infant and young child feeding. World Health Organization.

**Ouedraogo A** 2013. Outpatient follow-up of severely malnourished children from six to thirty-six months after hospitalization: case of CREN Moriya in Ouagadougou. University of Ouagadougou: Burkina Faso.

**Smith L & Haddad L** 2014. Reducing Child Undernutrition: Past Drivers and Priorities for the Post- MDG Era. *IDS Working Papers*. **2014 (441)**: 1-47.

**UNICEF Staff** 2011. The state of the world's children 2011-executive summary: Adolescence an age of opportunity.

**UNICEF WHO** 2000. Management of the child

with a serious infection or severe malnutrition: guidelines for care at the first-referral level in developing countries.

**Victora C, De Onis M, Hallal P, Blössner M & Shrimpton R** 2010. Worldwide timing of growth faltering: revisiting implications for interventions. *Pediatrics*. **125 (3)**: 473-480.

**World Health Organization** 2005. Guiding principles for feeding non-breastfed children 6-24 months of age.

**Yousaf H, Zafar MI, Anjum F & Adil SA** 2018. Food security status and its determinants: A case of farmer and non-farmer rural households of the Punjab, Pakistan. *Pakistan Journal of Agricultural Sciences*. **55 (1)**.

**Zoungrana B, et al.** 2019. Performance and cost of management of severe acute malnutrition with complications in Kaya, Burkina Faso. *Pan African Medical Journal*. **34**: 145-145.